

St Joseph's School

Morrinsville



Semper Fidelis
Pumau Ki te Atua

Phone/Fax (07) 889-5306
Email: admin@stjoes.school.nz
www.stjoes.school.nz

Newsletter



Kia Ora Everyone,

Tuesday, May 19th 2020



It is so exciting to have our students and staff back at school. We have started the week very smoothly. Most of our students are excited to be back in school, especially to see their friends. On behalf of our staff we would like to thank you for your support on minimising adults in school. We are very proud of how well the students are adjusting to being dropped and picked up at the school gates. This is an opportunity to build independence, resilience and managing their own self and belongings.

We welcome our newest students and families to school, **Lewis Verner, Luke Ball and Kenedi Pickett**. We are so excited to have you at school! Lewis, Luke and Kenedi join our Whakatipu Hub of learning.

Staff are using the next two weeks to resettle students and class routines and programmes. You are very welcome to contact class teachers via school app or school email if you want to touch base.

At this stage most interschool events that were to take place in Term 2 have been cancelled. We will keep you posted with any updates along the way. Basically for the next few weeks, under Alert Level 2, schools will take an insular approach. Kapahaka and music lessons (organised by specialists) will start in a few weeks. We have also scheduled the Footsteps Dance Programme to begin in June.

Our teacher Lee White, is on leave for the next few weeks due to surgery. We welcome Miss Michelle Parker to our teaching team. Michelle will be the class teacher in Room 6 until Lee is able to return. We wish Lee a very speedy, but restful recovery.

Just a note to say that sausage sizzle on Thursdays will be postponed for a few weeks. We will let you know when this will be up and running again.

At the moment students are able to wear either winter or summer uniform to school. As of 2 June winter uniform will be the set uniform. A copy of our winter uniform list on page 2 or available on our school website www.stjoes.school.nz

Just a reminder for pick up times under Alert Level 2....

If your child is an **only child** at our school and is in **Whakatipu or Akonga Hub**, they can be picked up at **2.40 pm**

If your child is an **only child** at our school and is in **Rooms 3, 4, 5, 6**, they can be picked up at **2.45 pm**

Students with siblings at school can be picked up at the normal time of **2.55 pm**

Buses will run as normal from 2.55pm

We know that the lockdown period affected many people in different ways.

If you need support, please do not hesitate to ask.

This includes support with Diocesan Fees.

Please email principal@stjoes.school.nz or give me a call on 07 889 5306.

Have a lovely week. God Bless
Andrea Colebourn, Principal

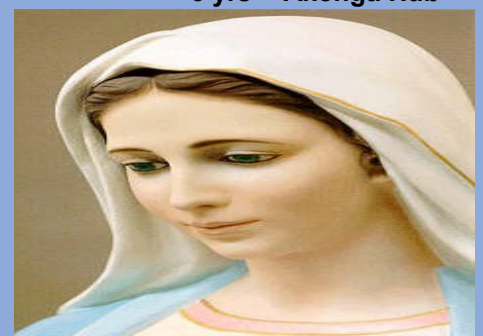


A Prayer to Mary

Dear Mary,
Watch over us
Keep us safe
Help us to be kind to each other
Help people get through this
hard time

Amen

Cienna Ball
6 yrs - Akonga Hub



Winter Uniform... Term 2 and 3 2020... Currently students have the option of summer or winter uniform but FROM Tuesday, June 2nd students are to be in our regulation winter uniform.

ALL pupils must be in correct winter uniform, including PE uniform. All official uniform requirements are able to be purchased through Harry's Menswear and a selection of second hand uniform (mainly boys) is available at school for \$2.00 per item.

- ◆ Please note that a scarf, in school colours only, can be worn on cold days. Scarves are not a part of the school uniform and can not be worn on official occasions regardless of school colour. This privilege will be withdrawn if flouted.
- ◆ Black shoes are also a requirement of our school uniform. Please ensure that these are sturdy and waterproof. Training shoes are for PE use only and are not to be worn as part of the correct uniform.
- ◆ Everybody must have an official school jersey and/or school jacket.
- ◆ Regulation **ONLY** navy blue track pants are optional and can be worn as part of the daily PE uniform over black PE shorts — not to be worn to and from school.

Girls Uniform

- Check pleated tunic
- Check pleated tunic or pleated skirt (Year 7 & 8 only)
- White long sleeve winter blouse
- Regulation royal blue school jersey with emblem
- Navy Skivvy (optional) to be worn under blouse
- Navy Blue knee high long socks or navy blue tights
- Black shoes (Yr 1 & 2 option lace up, velcro fastened or ankle boots)
- Regulation tracksuit pants (optional)
- Regulation jacket (optional - not for indoor use)
- Ribbon/Ties: colours to match tunic/shirt only)

Boys Uniform

- Grey long shirt
- Navy Skivvy (optional) to be worn under shirt
- Regulation royal blue school jersey with emblem
- Grey woollen shorts
- Grey knee high long socks
- Black shoes (Yr 1 & 2 option lace up, velcro fastened or ankle boots)
- Regulation tracksuit pants (optional)
- Regulation jacket (optional - not for indoor use)

PE Uniform:

Regulation PE polo shirt. Girls – black shorts or bike pants

Boys– black rugby type

Protect yourself and others from COVID-19



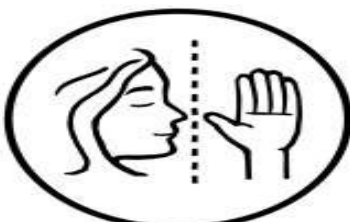
Wash your hands with soap and water often (for at least 20 seconds). Then dry.



Cough or sneeze into your elbow or by covering your mouth and nose with tissues.



Clean and disinfect frequently touched surfaces and objects, such as door knobs.



Don't touch your eyes, nose or mouth if your hands are not clean.



Put used tissues in the bin or a bag immediately.



Stay home if you feel unwell.

Find out more at [Covid19.govt.nz](https://www.covid19.govt.nz)

Unite against COVID-19